

DV Toolkit for Pro Tools LE

Version 6.7 for LE Systems on Windows and Macintosh

Digidesign

2001 Junipero Serra Boulevard
Daly City, CA 94014-3886 USA
tel: 650-731-6300
fax: 650-731-6399

Technical Support (USA)

tel: 650-731-6100
fax: 650-731-6384

Product Information (USA)

tel: 650-731-6102
tel: 800-333-2137

International Offices

Visit the Digidesign Web site
for contact information

Web Site

www.digidesign.com



digidesign

Copyright

This guide is copyrighted ©2004 by Digidesign, a division of Avid Technology, Inc. (hereafter "Digidesign"), with all rights reserved. Under copyright laws, this guide may not be duplicated in whole or in part without the written consent of Digidesign.

DIGIDESIGN, AVID and PRO TOOLS are trademarks or registered trademarks of Digidesign and/or Avid Technology, Inc. All other trademarks are the property of their respective owners.

Product features, specifications, system requirements, and availability are subject to change without notice.


PN 932013934-00 REV A 09/04

chapter 1

DV Toolkit for Pro Tools LE

DV Toolkit


DV Toolkit provides post production features to Pro Tools LE systems (such as Mbox and Digi 002).

 *For information on standard Pro Tools LE features, refer to the Pro Tools Reference Guide.*

What's Included

The DV Toolkit for Pro Tools LE package contains the following components:

- License Card for authorizing DV Toolkit software using an iLok Smart Key (not supplied)

 *DV Toolkit software is included with your Pro Tools LE CD-ROM.*

- Printed Guides
 - *DV Toolkit for Pro Tools LE Guide*
 - *DigiTranslator Guide*
- Registration Card

System Requirements

To use DV Toolkit, you need:

- A Digidesign-qualified Pro Tools LE system

For complete system requirements visit the compatibility page of the Digidesign Web site (www.Digidesign.com/compato).

Compatibility Information

Digidesign can only assure compatibility and provide support for hardware and software it has tested and approved.

For a list of Digidesign-qualified computers, operating systems, hard drives, and third-party devices, refer to the latest compatibility information on the Digidesign Web site (www.digidesign.com/compato).

Register DV Toolkit for Pro Tools LE

Make sure to complete and return the registration card included with your DV Toolkit. Registered users will receive periodic software update and upgrade notices. Refer to the included registration card for information on technical support.

DV Toolkit Features

For information on Pro Tools LE, refer to your Pro Tools system's *Getting Started Guide*, and the *Pro Tools Reference Guide*.

DV Toolkit includes the following features:


Time Code Features

DV Toolkit enables the following time code features for working with film, video, or digital video in Pro Tools LE:

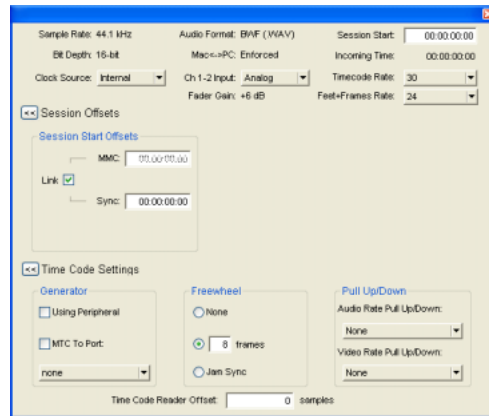
- Timebase Rules (Time Code and Feet+Frames)
- Time Code Rate Selector (Pro Tools 6.4 and higher only)
- Feet+Frame Rate Selector (Pro Tools 6.4 and higher only)
- Redefine Current Time Code Position
- Redefine Current Feet+Frames Position (Pro Tools 6.4 and higher) or Feet.Frames (Pro Tools 6.2.x and lower)
- Use Subframes Option
- Audio Rate Pull Up and Pull Down
- Video Rate Pull Up and Pull Down
- Pull Ups to NTSC/PAL Film Standards Preference (Pro Tools 6.3.x and lower)
- Time Code Mapping Options when importing tracks
- Custom Shuttle Lock Speed
- Scrubber Tool for scrubbing a Movie track

Timebase Rulers

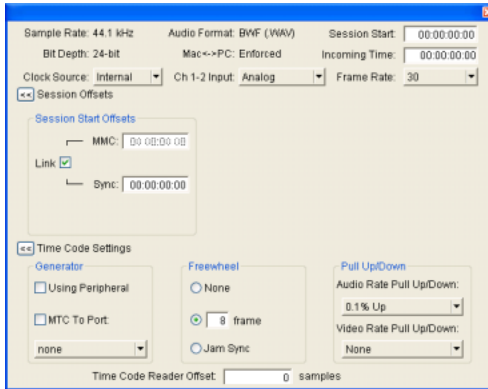
DV Toolkit adds Timebase Rulers to your session, so that you can use Spot mode to spot audio to Time Code or Feet+Frames (called Feet.Frames in Pro Tools 6.2.x and lower).

 See the Reference Guide for more information.

Time Code Displays the Time Scale in SMPTE frames (hours:minutes:seconds:frames). The Timecode Rate can be set in the Session Setup window with the Timecode Rate selector (Pro Tools 6.4 and higher) or Frame Rate selector (Pro Tools 6.2.x and lower).



Session Setup window with DV Toolkit Option (Pro Tools 6.7)



Session Setup window with DV Toolkit Option
(Pro Tools 6.2.x and lower)

Pro Tools supports the following rates: 23.976 fps, 24 fps, 25 fps, 29.97 fps Non-Drop, 29.97 fps Drop, 30 fps Non-Drop, and 30 fps Drop. See the *Pro Tools Reference Guide* for more information.

Feet+Frame Rate Selector

(Pro Tools 6.4 and Higher Only)

Feet+Frame rates for sessions can be set in the Session Setup window with the Feet+Frame Rate selector. Supported rates are 23.976, 24, and 25 fps.

Set this rate to match the rate of the film projector, or the video if the film projector speed is taken into account. For example, doing a Telecine transfer from a 24 fps film projector to NTSC video would necessitate the projector running at 23.976 fps. This is regardless of whether the session is using audio pull down or not.

Redefine Current Time Code Position

Use this command to redefine the current time code position and session start time. By creating an insertion point (or selection), and then entering the desired new time code position for that location, the session start time will be recalculated based on the new, relative Time Code location.

In Pro Tools 6.4 and higher, this command is located in the Setups menu. In Pro Tools 6.2.x, this command is located in the Edit menu.

To redefine a current Time Code code position:

- 1 With the Selector, click in a track (or make a selection) where you want to redefine the position.

⚠ *If your insertion or selection is not on a grid boundary, it will round to the closest boundary.*

- 2 Choose Setups > Redefine Current Timecode Position.
- 3 Enter a new SMPTE frame number in the dialog to correspond to the time code shown in the dialog.
- 4 Click OK.

Redefine Current Feet+Frames Position

(Pro Tools 6.4 and Higher Only)

Use this command to redefine the current Feet+Frames position. By creating an insertion point (or selection), and then entering the desired new Feet+Frames position for that location, the session start time is recalculated based on the new, relative Feet+Frames location.

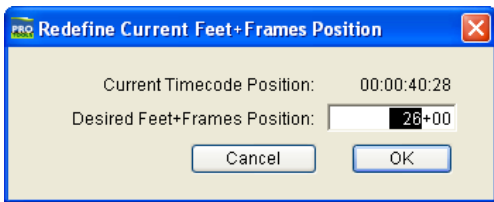
Typically, this command is used for integrating test tones, pre-roll, Academy leader, and similar pre-program material into Pro Tools sessions.

To set a relative frame position for a session (Feet+Frames):

1 With the Selector, click in a track (or make a selection) where you want to redefine the position.

⚠ *If your insertion or selection is not on a grid boundary, it will round to the closest boundary.*

2 Choose Setups > Redefine Current Feet+Frames Position.



Redefine Current Feet+Frame Position dialog

3 Enter a Feet+Frame position to correspond to the time code shown in the dialog.

4 Click OK.

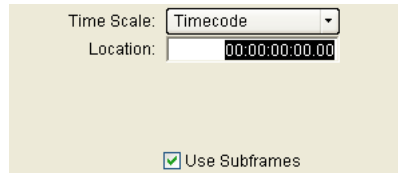
Feet.Frames Command

(Pro Tools 6.2.x Only)

For sessions in which feet and frames are the time scale of reference, the Feet.Frame command (located in the Setups menu), lets you enter a Start Frame based on an appropriate frame location at the beginning of your project tape. The Feet.Frame Ruler will then use this value as its start reference.

Use Subframes Option

When spotting or shifting material in Pro Tools, or using the Go To dialog, click the Use Subframes option for greater precision.



Additional time field with "Use Subframes" enabled

A subframe is 1/100th of a frame. The Use Subframes option enables you to use these smaller units for greater accuracy. This command adds an additional time field in the SMPTE hours:minutes:seconds:frames box, which appears as the far right time field when enabled. Use a period to separate subframe values from whole frames.


The following dialogs include a Use Subframe option:


- Spot dialog
- Shift dialog
- Go To dialog

⚠ *Subframe measurements are not available in the Current Time field.*

Pull Up and Pull Down

Use Audio Rate Pull Up/Down and Video Rate Pull Up/Down for audio layback to film or video, or when recording audio for film or video. See the *Pro Tools Reference Guide* for more information.

 *When using Audio Rate Pull Up/Down, DV Toolkit does not automatically adjust the Pro Tools sample rate clock during playback or recording. To synchronize to your external device, or to do a real-time transfer, you must manually adjust your external (S/PDIF or Optical) clock device according to the pull factors that are being used.*

 *When using a video I/O (such as the Avid Mojo) as the S/PDIF clock source, Audio Rate Pull Up/Pull Down is not supported.*


Audio Rate Pull Up/Down Applies pull up or pull down factors to session audio record and playback. The Audio Rate Pull Up/Down pop-up menu is located in the Session Setup window.

Video Rate Pull Up/Down Lets you change the frame rate of video playback independently from the audio pull-ups (if any). The Video Pull Up/Down pop-up menu is located below the Audio Rate Pull Up/Down pop-up menu in the Session Setup window. Choices are determined by the file format of the video clip, as well as its frame rate.

Audio Pull Down Factors and QuickTime Movies

Audio “pulls” are an industry standard method of adjusting the speed of audio playback to line up with off-speed picture.

When an NTSC video copy has been made from a 24 frame film source, it is necessary to slow the film during the transfer process by 0.1%. Therefore, in order for production audio in Pro Tools to line up with this new slower picture, it is now necessary to “pull down” the audio in a Pro Tools session. Once all the editing and mixing referencing this pulled down video is complete, the user can turn off the audio pull down and the audio plays at the original film speed. This is a common reason why people buy powerful TDM systems which incorporate extensive pull capabilities.

 *Midi is always pulled in line with audio pulls.*

DV Toolkit for Pro Tools LE offers limited pull capabilities, primarily for TDM users who have a secondary Pro Tools LE system that they use to perform smaller tasks or “go portable.”

In normal industry standard workflows, when audio is pulled down, video and time code maintain their current speed, and only the audio and MIDI are pulled down, in relationship to the video and time code. Although DV Toolkit for Pro Tools LE offers some pull down options, it does not have the ability to adjust the internal sample clock the same way large TDM systems do in tandem with the Digidesign SYNC I/O peripheral.

Since DV Toolkit for Pro Tools LE does not have any means to adjust the Pro Tools sample clock, it instead simulates the audio/ video pull relationship by pulling up the video instead of pulling down the audio. This maintains the proper video/audio speed relationship when using the fixed Pro Tools internal clock. The audio sample clock is not pulled down, so the digital outputs are not outputting a pulled down sample clock.

If you are using an external clocking source (such as S/PDIF or ADAT Optical), Pro Tools audio and MIDI is resolved to the Digital input's clock speed. If you select audio pull down in Pro Tools, the audio still doesn't pull down in Pro Tools LE; the video still pulls up to maintain the proper relationship, and the actual Pro Tools sample rate is now dependent on the digital clock source. However, if the incoming Digital Clock speed is *pulled down*, the Pro Tools audio and MIDI will run at a pulled down rate, and the video will be pulled up, returning picture to its normal speed.

So, when pull down is selected in DV Toolkit for Pro Tools LE, the following occurs:

- If the external clock is not pulled down, the actual sample rate of Pro Tools LE audio and MIDI is not pulled down, but the video is pulled up.
- If the external clock is pulled down, the actual sample rate of LE audio and MIDI is pulled down, and the video plays at its original non-pulled speed.

Limit Pull Ups to NTSC/PAL Film Standards Preference (Pro Tools 6.3.x and Below)

The Limit Pull Ups to NTSC/PAL Film Standards preference filters the list of pull up and pull down rates to only those which apply to approved NTSC/PAL film standards. This preference is enabled by default, but can be changed in Setups > Preferences > Operation.

When this preference is not enabled, the Audio Rate Pull Up and Down menu offers all possible combinations of pull ups and pull downs for the audio sample rate, regardless of the session frame rate.

Time Code Mapping Options when Importing Tracks

When specifying where imported tracks are placed in the current session, times include time code.

From the Import Session Data dialog, the following Import Mapping Options are available:

- Maintain Absolute Time Code Values
- Maintain Relative Time Code Values
- Map Start Time Code to hh:mm:ss:ff



See the Reference Guide for more information.

Custom Shuttle Lock Speed

Use the Custom Shuttle Lock Speed preference to customize the highest fast-forward Shuttle Lock speed (key 9) to better match your editing and auditioning needs.

To configure Custom Shuttle Lock Speed:

- 1 In Pro Tools, select **Setups > Preferences**, and click the **Operations** tab.
- 2 Be sure that the **Numeric Keypad mode** is set to **Transport** or **Classic**.
- 3 Enter a desired percentage for the **Custom Shuttle Lock Speed** setting. The range for this setting is 50–800%. You can use the **Up** and **Down Arrow** keys to increase or decrease the setting.
- 4 Click **OK**.

The Custom Shuttle Lock Speed will be saved with your Pro Tools preferences (not with the session).

To enable Custom Shuttle Lock Speed:

- Press **Start+9** (Windows) or **Control+ 9** (Macintosh) on the numeric keypad.

Scrubbing a Movie Track

You can use the Scrubber tool to scrub a Movie track (or Quicktime track) with full-frame accuracy. If you scrub directly on the Movie track, only the movie will scrub (no audio will play). If you scrub on an audio track, audio and the movie will scrub simultaneously.

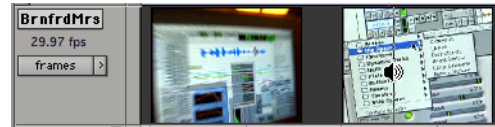
To scrub a Movie track:

- 1 Select the Scrubber tool.



Scrubber tool

- 2 Click in the Movie track and drag the Scrubber.



Scrubbing a Movie Track

Scrubbing with an Avid Mojo

⚠ *This section is for Pro Tools software versions that support Avid Mojo. Refer to the documentation that came with your Pro Tools software, and visit the compatibility page of the Digidesign Web site (www.digidesign.com)*

When you begin to scrub, the Scrub window will appear on your desktop. The Scrub window provides greater accuracy when scrubbing than can be achieved with any FireWire attached video transcoder.

💡 *To scrub with finer precision, press the Command key while scrubbing*

To resize and place the Scrub window in a different location, choose **Movie > Set Scrub Window Size/Location** and change the settings.

DINR LE


The LE version of Digidesign Intelligent Noise Reduction (DINR) includes the following type of noise removal:

Broadband Noise Reduction (BNR) Provides broadband and narrowband noise reduction for suppressing such unwanted elements as tape hiss, air conditioner rumble, and microphone preamp noise. With DNR LE, BNR is only available as an AudioSuite plug-in.

 Refer to the *Digidesign Plug-Ins Guide for details on using BNR.*

DigiTranslator

DigiTranslator lets Pro Tools exchange audio and video files, and sequences with other AAF and OMFI-compatible applications.

 Refer to the *DigiTranslator Integrated Option Guide for details on using DigiTranslator.*


VocAlign Project from Synchro Arts

VocAlign Project from Synchro Arts automatically adjusts the timing of one audio signal to match another by applying varying amounts of time stretching or compression to the audio. It is designed for synchronizing replacement dialogue in video and film post production, but is also useful for tightening up doubled vocal or instrumental parts in music.

 Refer to the *VocAlign Project documentation for details.*

Installing DV Toolkit

To install DV Toolkit

- 1 Insert the Pro Tools Installer CD-ROM for your version of Pro Tools into your CD-ROM drive.
- 2 Locate and open the Pro Tools Installer folder, and click the Setup icon.
- 3 Do one of the following:
 - If you installing both Pro Tools and DV Toolkit for the first time, click Next when the installer opens.
 - or –
 - If you are adding DV Toolkit to an existing Pro Tools system, choose Modify and click Next.
- 4 Select DigiTranslator and DV Toolkit options.
 -  *If you are adding DV Toolkit to an existing Pro Tools system, do not deselect anything else.*
- 5 Click Next to begin installation.

With Pro Tools 6.4 and higher, the installer process installs the Time Code features unique to DV Toolkit, plus DigiTranslator, DINR LE, and VocAlign Project software from Synchro Arts. These files are installed separately from the Pro Tools application. Continue to the next step.

With Pro Tools 6.2.x and lower, the installer process automatically replaces your current Pro Tools LE with a version of Pro Tools LE that provides the Time Code features unique to DV Toolkit, DigiTranslator, and DINR LE. Continue to the next step.

- 6 When installation is complete, restart your computer.

7 When you open Pro Tools, you will be prompted to authorize DV Toolkit, DigiTranslator, DINR LE, and VocAlign Project.

8 For Pro Tools 6.2.x and lower only, complete the following to install the VocAlign Project software from Synchro Arts:


- Locate and open the DV Toolkit Installer folder.
- Double-click the Install VocAlign Project icon.
- Click Next to begin installation.
- When installation is complete, restart your computer.

Authorizing DV Toolkit Software

Each DV Toolkit software component is authorized using the iLok USB Smart Key (iLok) and License Card from PACE Anti-Piracy.


The iLok is similar to a dongle, but unlike a dongle, it is designed to securely authorize multiple software applications from a variety of software developers.

This key can hold over 100 authorizations for all of your iLok-enabled software. Once an iLok is authorized for a given piece of software, you can use the iLok to authorize that software on any computer.

 *The iLok USB Smart Key is not supplied with the DV Toolkit package, and must be purchased separately.*

License Cards are specific to each plug-in. You will receive the appropriate License Cards for the plug-ins that you purchase. License Cards have a small punch-out plastic chip called a GSM cutout.

DV Toolkit provides one License Card, with separate authorizations for each software component.


 *For additional information about iLok technology and authorizations, see the electronic PDF of the iLok Usage Guide.*

The authorization steps in this section must be repeated for each of the following DV Toolkit software components:

- Pro Tools LE for DV Toolkit (for Time Code features)
- DINR LE
- DigiTranslator
- VocAlign Project from Synchro Arts

To authorize a DV Toolkit software component with iLok:

- 1** Insert the iLok into an available USB port on your computer.
- 2** Launch Pro Tools. You will be prompted to authorize any installed unauthorized plug-ins or software options.

 *If you are already using a demo version of the plug-in or software option, launch Pro Tools before you insert the iLok, then insert the iLok into any available USB port when prompted by Pro Tools.*

- 3** Follow the on-screen instructions until you are prompted to insert the License Card into the iLok.
- 4** Separate the GSM cutout from the larger protective card by pulling it up and out with your thumb. Do not force the cutout down with your finger.

5 Insert the GSM cutout into the iLok. Visually verify that the metal portion of the cutout makes contact with the iLok's metal card reader.



iLok with License Card

6 Follow the on-screen instructions to complete the authorization process for each DV Toolkit software component.

7 After the authorization has completed, remove the GSM cutout from the iLok. (If you have to remove the iLok from the computer to remove the cutout, be sure to re-insert the iLok in any available USB port on your computer when you are finished.)

Removing DV Toolkit for Pro Tools LE

If you let a demo version of a DV Toolkit component expire, you should remove it from your system. Otherwise, each time you open Pro Tools you will be prompted with a message that the component has expired.

Windows

To remove DV Toolkit on Windows XP (Pro Tools 6.2 and higher):

- 1 Click Start.
- 2 Click Control Panel.
- 3 Double-click Add or Remove Programs.
- 4 From the Currently installed programs list, select Digidesign Pro Tools LE.

5 Click the Change/Remove button.

6 Choose the Modify button.

7 Click Next

8 Uncheck the DV Toolkit box.

9 Click Next.


10 When removal is complete, close the Add or Remove Programs window.

Macintosh

To remove DV Toolkit on Macintosh (Pro Tools 6.4 and higher):

- 1 Open the Pro Tools folder on your Startup drive (Applications/Digidesign/ Pro Tools).
- 2 Drag the files for DV Toolkit and DigiTranslator to the Trash:
 - TimeCode.dll (Pro Tools for DV Toolkit)
 - OMF.dll (DigiTranslator)
- 3 Open the Plug-Ins folder on your Startup drive (Library/Application Support/Digidesign/Plug-Ins).
- 4 Drag the BNR (Broadband Noise Reduction) plug-in to the Trash.
- 5 Drag the VocALignEX plug-in to the Trash.
- 6 Empty the Trash.

To remove DV Toolkit from Macintosh (Pro Tools 6.2.x and lower):

 *Removing DV Toolkit for Pro Tools LE 6.2.x and lower on Macintosh also removes the Pro Tools LE application.*

To reinstall Pro Tools LE 6.2.x on Macintosh, reinstall Pro Tools from the Pro Tools Installer CD-ROM.

- 1** Make sure you are logged in as an Administrator for the account where Pro Tools LE DV is installed. For details on Administrator privileges in Mac OS X, refer to your Mac OS X documentation.
- 2** Insert the Pro Tools LE Installer CD-ROM into your CD-ROM drive.
- 3** Locate and double-click the file named “Install Pro Tools LE.”
- 4** Enter your Administrator password and click OK to authenticate the installation.
- 5** In the Installer window, choose Uninstall from the pop-up menu, and click Uninstall.
- 6** Click Quit to close the Installer window.

 *To remove Synchro Arts VocALign Project, refer to its documentation.*

Demo Mode

DV Toolkit can be run in demo mode before it is authorized.

To use DV Toolkit in demo mode:

- 1** After installing DV Toolkit, launch Pro Tools LE. A dialog will appear for DV Toolkit, asking if you would like to start your demo period for DV Toolkit.
- 2** Click Try It for each DV Toolkit component.

The first time you launch Pro Tools after the demo period has ended, a dialog indicates that your demo has expired. You will need to authorize DV Toolkit at this time to continue using it.

If you do not authorize the DV Toolkit option at the end of the demo period, you will encounter the copy protection warning dialog every time you launch Pro Tools. If you do not intend to authorize the DV Toolkit option on your system, you should uninstall DV Toolkit.

 *To uninstall DV Toolkit, see “Removing DV Toolkit for Pro Tools LE” on page 10.*