


Digidesign ASIO Driver Usage Guide (Released and Qualified with Pro Tools 6.8.1 for Digidesign Mbox 2 Systems on Windows XP)


Introduction


The Digidesign ASIO Driver is a single-client, multichannel sound driver that allows ASIO third-party audio programs that support the ASIO Driver standard to record and play back through the Mbox 2.

Full-duplex playback of 24- and 16-bit audio are supported at sample rates up to 48 kHz, depending on your Digidesign hardware and ASIO program used.

The Digidesign ASIO Driver will provide up to up to 4 channels of input and 2 channels of output with Mbox 2.


 *The ASIO Driver is not multi-client. Only one application at a time can use the ASIO Driver. Be sure to disable the Windows system sounds. It is also recommended that you use a separate sound card for games or other general work.*

 *The ASIO Driver cannot be used if another application on the system is sending audio to Digidesign hardware through the Digidesign Wavedriver. If your system has both the Wavedriver and ASIO Driver installed be sure to disable Windows system sounds. It is also recommended that you use a separate sound card for games or other general work.*

 *Check the Digidesign Web site (www.digidesign.com) for the latest third-party drivers for Pro Tools hardware, as well as current known issues.*

Compatibility

This version of Digidesign ASIO Driver can be used on Digidesign-qualified Pro Tools systems running on Windows XP.


 *To use Digidesign ASIO Driver without Pro Tools, use the stand-alone version of the Digidesign ASIO Driver. The stand-alone version of Digidesign ASIO Driver is available on the Digidesign Web site (www.digidesign.com)*

For a list of ASIO Driver-compatible software, see the compatibility documents available on the Digidesign Web site (www.digidesign.com/compato).

Digidesign can only assure compatibility and provide support for hardware and software it has tested and approved. For a list of Digidesign hardware systems, Digidesign-qualified computers, operating systems, and devices, and Digidesign-qualified third-party ASIO-compatible programs, refer to the latest compatibility information available on the Digidesign Web site (www.digidesign.com/compato).

Installing the ASIO Driver

Digidesign ASIO Driver is automatically installed when you install Pro Tools (it is a separate option in the Pro Tools LE installer, but it is selected for installation by default).

 For complete instructions on installing Pro Tools, see the *Getting Started Guide for your Pro Tools system*.

 To use Digidesign ASIO Driver without Pro Tools, use the stand-alone version of the Digidesign ASIO Driver. The stand-alone version of Digidesign ASIO Driver is available on the Digidesign Web site (www.digidesign.com)

Removing the ASIO Driver

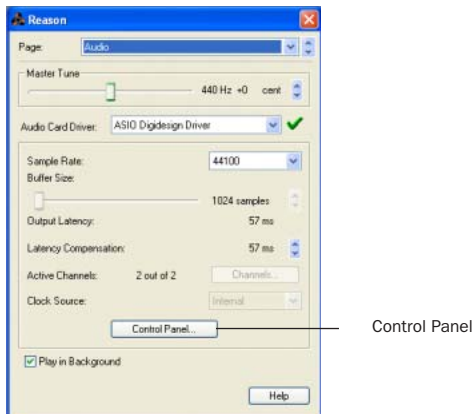
If you need to remove the ASIO Driver from your computer, complete the following steps.

To remove the ASIO Driver:

- 1 Click Start.
- 2 Click Control Panel.
- 3 Double-click Add or Remove Programs.
- 4 From the Currently installed programs list, select Digidesign Pro Tools.
- 5 Click the Change/Remove button.
- 6 Choose the Modify button.
- 7 Click Next.
- 8 Uncheck the ASIO Driver box.
- 9 Click Next.
- 10 When removal is complete, close the Add or Remove Programs window.

Configuring ASIO Driver Settings

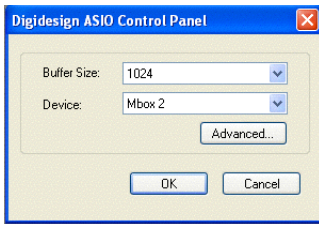
Configuring ASIO Driver settings is done in your third party ASIO program. See your program's documentation. For example, with Propellerhead Reason, click on the Control Panel button.



Setup Example, using Propellerhead Reason

ASIO Driver Control Panel

From the ASIO Driver Control Panel, you can configure the ASIO Driver for your Pro Tools system.



Digidesign ASIO Control Panel

The Digidesign ASIO Driver Control Panel cannot be accessed under the following circumstances:

- When Pro Tools is running.
- When playing or recording in an audio program that does not support the ASIO Driver.
- When using a third-party audio program that has an option to keep the ASIO Driver “open” even when you are not playing or recording. (You must close the audio program before you can open the ASIO Driver Control Panel.)

Buffer Size Control

When you play a file from a client audio program, the client program divides the file into little chunks (buffers) and sends each of these to the ASIO Driver. The ASIO Driver copies the client program’s buffers to your Digidesign hardware’s own buffers in a double-buffering scheme. The Buffer Size control in this dialog lets you to set the size of each of the two buffers the ASIO Driver uses on Digidesign hardware. You may select from the following buffer sizes (depending on your Digidesign hardware):

- 128 samples
 - 256 samples
 - 512 samples
 - 1024 samples
 - 2048 samples
- ◆ Small buffers have the advantage of low latency in the record monitor path. (Latency is the time delay between a signal entering the audio inputs and leaving the outputs during recording.)
- ◆ Larger buffers have the advantage of making the Digidesign ASIO Driver more immune to audio dropouts during playback and recording.

In some ASIO-compatible audio programs, performing various tasks will interrupt the ASIO Driver and may result in clicks and pops in audio playback or recording. Choosing medium or large buffers (such as 256, 512, or 1024) can help alleviate this problem.

Changing the Buffer Size for the Digidesign ASIO Driver does not affect the H/W Buffer Size settings in the Pro Tools Playback Engine dialog.

Device

The Device Type will always be set to your installed Pro Tools hardware.

Advanced Button

The Advanced button opens the Hardware Setup dialog for the Digidesign hardware that you are using. Refer to the *Getting Started Guide* for your Digidesign hardware.

DIGIDESIGN, AVID, Mbox 2 and PRO TOOLS are trademarks or registered trademarks of Digidesign and/or Avid Technology, Inc. ASIO is a trademark of Steinberg Soft- und Hardware GmbH. All other trademarks are the property of their respective owners