

# Pro Tools

## Addendum

**Version 6.1.1 for LE Systems on Windows or Macintosh**

### **Digidesign**

2001 Junipero Serra Boulevard  
Daly City, CA 94014-3886 USA  
tel: 650-731-6300  
fax: 650-731-6399

### **Technical Support (USA)**

tel: 650-731-6100  
fax: 650-731-6384

### **Product Information (USA)**

tel: 650-731-6102  
tel: 800-333-2137

### **International Offices**

Visit the Digidesign Web site  
for contact information

### **Web Site**

[www.digidesign.com](http://www.digidesign.com)



**digidesign**

**Copyright**

This document is copyrighted ©2003 by Digidesign, a division of Avid Technology, Inc. (hereafter "Digidesign"), with all rights reserved. Under copyright laws, this document may not be duplicated in whole or in part without the written consent of Digidesign.

DIGIDESIGN, AVID and PRO TOOLS are trademarks or registered trademarks of Digidesign and/or Avid Technology, Inc. All other trademarks are the property of their respective owners.

All features and specifications subject to change without notice.

PN 934212393-00 REV A 09/03

# contents

<b>Chapter 1. Introduction</b> .....	1
New Features .....	1
Compatibility .....	2
<b>Chapter 2. What's New in Pro Tools LE 6.1.1 on Windows XP</b> .....	3
Support for Windows Media 9 Encoding .....	3
Windows Media Audio Encoder .....	4
Auto-Scrolling Tracks in the Edit and Mix Windows .....	5
Custom Shuttle Lock Speed .....	5
Digidesign ASIO Driver 6.1.1 .....	5
Stand-Alone ASIO Driver Installer .....	6
WaveDriver 6.1.1 .....	6
Stand-Alone WaveDriver Installer .....	6
Improved Direct I/O MIDI Driver for Digi 002, Digi 002 Rack, and Digi 001 .....	6
<b>Chapter 3. What's New in Pro Tools LE 6.1.1 on Mac OS X</b> .....	7
Custom Shuttle Lock Speed .....	7
Auto-Scrolling Tracks in the Edit and Mix Windows .....	7
Digidesign CoreAudio Driver 6.1.1 .....	8
Stand-Alone Digidesign CoreAudio Driver Installer .....	8
Support for CoreAudio with Digi 002 and Digi 002 Rack .....	8
CoreAudio Supported Applications Feature .....	8
Improved Direct I/O MIDI Driver for Digi 002, Digi 002 Rack, and Digi 001 .....	9



# chapter 1

## Introduction

This addendum is a supplement to the Pro Tools 6.1 guides. It documents the new and changed features in Pro Tools LE 6.1.1 for Digi 002, Digi 002 Rack, Digi 001, Mbox, and Audiomedia III systems.

---

### New Features

#### Windows

Pro Tools LE 6.1.1 includes the following new or enhanced features on Windows XP:

- Support for Windows Media 9 encoding
- Custom Shuttle Lock Speed
- Auto-Scrolling Tracks in the Edit and Mix Windows
- Digidesign ASIO Driver 6.1.1
  - Stand-alone ASIO Driver Installer
- Digidesign WaveDriver 6.1.1
  - Stand-alone WaveDriver Installer
- Improved Direct I/O MIDI Driver for Digi 001, Digi 002, and Digi 002 Rack

Descriptions of these features are covered in Chapter 2, “What’s New in Pro Tools LE 6.1.1 on Windows XP.”

#### Macintosh

Pro Tools LE 6.1.1 includes the following new or enhanced features on Mac OS X:

- Custom Shuttle Lock Speed
- Auto-Scrolling Tracks in the Edit and Mix Windows
- Digidesign CoreAudio Driver 6.1.1
  - Stand-alone CoreAudio Driver Installer
  - Support for CoreAudio with Digi 002 and Digi 002 Rack
  - New CoreAudio Supported Applications feature
- Improved Direct I/O MIDI Driver for Digi 001, Digi 002, and Digi 002 Rack

Descriptions of these features are covered in Chapter 3, “What’s New in Pro Tools LE 6.1.1 on Mac OS X.”

---

## Compatibility

Pro Tools LE 6.1.1 requires Pro Tools LE 6.1 and is supported on the following systems:

- Digi 002 and Digi 002 Rack
- Digi 001
- Mbox
- Audiomedia III

Digidesign can only assure compatibility and provide support for hardware and software it has tested and approved.

For a list of Digidesign hardware systems, Digidesign-qualified computers, operating systems, and third-party devices, refer to the latest compatibility information on the Digidesign Web site ([www.digidesign.com/compato](http://www.digidesign.com/compato)).

## chapter 2

# What's New in Pro Tools LE 6.1.1 on Windows XP

This chapter provides an overview of features that are new in Pro Tools LE 6.1.1 systems on Windows XP.


---

## Support for Windows Media 9 Encoding

Pro Tools LE 6.1.1 introduces Windows Media 9 encoding using the Bounce to Disk or Export Selected As Files commands. Pro Tools LE supports mono or stereo 16- or 24-bit encoding at sample rates of 44.1 kHz, 48 kHz, and 96 kHz (depending on your Digidesign hardware).

### To encode Windows Media 9 using Bounce To Disk:

- 1 Make a selection in the Pro Tools Edit window.
- 2 Choose File > Bounce to Disk. The Bounce dialog opens.
- 3 In the Bounce dialog, select Windows Media from the File Type pop-up menu.
- 4 Configure the remaining Bounce Options as desired.

 *For complete information on the Pro Tools Bounce Options, see the Pro Tools Reference Guide.*

5 Click Bounce. The Windows Media Audio Encoder dialog opens.

6 Configure the Windows Media Audio Encoder dialog (see “Windows Media Audio Encoder” on page 4) and click OK. The Save dialog opens.

7 In the Save dialog, specify a location, type a name for the encoded file, and click Save.


### To encode Windows Media 9 using Export Selected As Files:

1 Select an audio region in the Pro Tools Audio Regions List.

2 From the Audio Regions List pop-up menu, choose Export Selected As Files. The Export Selected dialog opens.

3 In the Export Selected dialog, select Windows Media from the File Type pop-up menu.

4 Configure the remaining Export Options as desired.

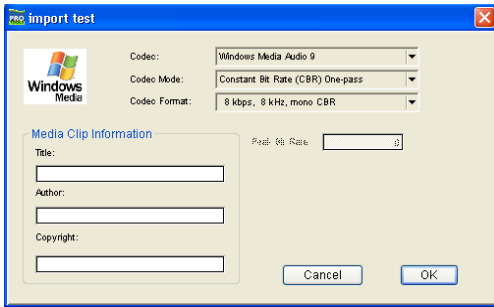
 *For complete information on the Pro Tools Export Options, see the Pro Tools Reference Guide.*

5 Click Export. The Windows Media Audio Encoder dialog opens.

**6** Configure the Windows Media Audio Encoder dialog (see “Windows Media Audio Encoder” on page 4) and click OK. The Save dialog opens.

**7** In the Save dialog, specify a location, type a name for the encoded file, and click Save.

## Windows Media Audio Encoder



*Windows Media Audio Encoder dialog*

### Media Clip Information

Use the Media Clip Information section of the Windows Media Audio Encoder dialog to enter the Title, Author, and Copyright metadata to be stored with the encoded file.

### Codec

Use the Codec pop-up menu to select one of the following codecs for encoding Windows Media Audio 9:

**Windows Media Audio 9** This codec supports variable bit rate. Windows Media Audio 9 is backwards compatible with older versions of Windows Media Audio-compatible decoders, allowing playback of new content on older players and operating systems.

**Windows Media Audio 9 Voice** This codec offers superior quality for low-bit-rate streaming (less than 20 Kbps) of both voice and music.

**Windows Media Audio 9 Professional** This codec supports full resolution audio, up to 24-bit and 96 kHz, for streaming or download-and-play delivery at 128–768 Kbps. Playback on older decoders will compensate for differences in the player’s capabilities and play back correctly at lower bit depths and sample rates.

**Windows Media Audio 9 Lossless** This codec is useful for archiving audio in a lossless format for optimal storage.

### Codec Mode

Use the Codec Mode pop-up menu to select one of the following Codec Modes for encoding Windows Media Audio 9:

**Constant Bit Rate (CBR) One-Pass** This mode should be used when targeting older Windows Media decoders.

**Constant Bit Rate (CBR) Two-Pass** This mode should be used when encoding for on-demand streaming audio.

**Variable Bit Rate (VBR) Quality Based** This mode ensures a constant level of quality. The bit rate spikes arbitrarily to maintain constant quality throughout a single encoding pass. Use this mode for archiving content.

**Variable Bit Rate (VBR) Unconstrained** This mode variably allocates bandwidth according to the amount of data at any point in the file. This mode requires a lower-average bit rate and file size for optimal sound quality.

**Variable Bit Rate (VBR) Constrained** This mode achieves the best-quality level while remaining within a predictable average bandwidth. Use this two-pass mode to encode files that can be downloaded before being played, or when you want to control the size of the encoded file.



## Codec Format

Use the Codec Format pop-up menu to select from the available bit rates for the selected Codec and Codec Mode. Higher bit rates result in higher quality audio, but require higher bandwidths. Lower bit rates require less bandwidth, but result in lower quality audio.

---

## Auto-Scrolling Tracks in the Edit and Mix Windows

If you are working with more tracks than can be displayed at one time in the Edit or Mix windows, you can select a track in one window and Pro Tools will automatically scroll to that track in the other window.

### To auto-scroll the Mix window to show a selected track in the Edit window:

- In the Edit window, Start-click (Windows) the track name.

The track becomes selected, and the Mix window scrolls to display the selected track.

### To auto-scroll the Edit window to show a selected track in the Mix window:

- In the Mix window, Start-click (Windows) the track name.

The track becomes selected, and the Edit window scrolls to display the selected track.

---

## Custom Shuttle Lock Speed

Pro Tools LE 6.1.1 adds a Custom Shuttle Lock Speed preference to specify the speed for fixed-speed shuttle mode operations.

Shuttle Lock mode lets you use the numeric keypad to shuttle forward or backwards at specific speeds: 5 is normal speed, 6–9 provide increasingly faster fast-forward speeds, and keys 1–4 provide progressively faster rewind speeds (4 is the slowest rewind Shuttle Lock speed, 1 is the fastest).

Using the Custom Shuttle Lock Speed preference, you can customize the highest fast-forward Shuttle Lock speed (key 9) to better match your editing and auditioning needs.

### To configure Custom Shuttle Lock Speed:

- 1 In Pro Tools, select Setups > Preferences, and click the Operations tab.
- 2 Enter a desired percentage for the Custom Shuttle Lock Speed setting. The range for this setting is 50–800%.



*The Custom Shuttle Lock Speed setting can also be increased or decreased using the Arrow keys.*

- 3 Click OK. The new Custom Shuttle Lock Speed will be saved to the Pro Tools preferences (not with the session).
- 4 The new Custom Shuttle Lock Speed can be activated by pressing Start+9 (numeric keypad).



*For more information on Shuttle Lock, see the Pro Tools Reference Guide.*

---


## Digidesign ASIO Driver 6.1.1

Digidesign ASIO Driver 6.1.1 is a single-client, multichannel sound driver that allows ASIO-compatible programs to record and play back through Digidesign hardware.

ASIO Driver 6.1.1 is automatically installed when you install Pro Tools LE 6.1.1.

## Stand-Alone ASIO Driver Installer

Digidesign ASIO Driver 6.1.1 can be installed on Digidesign-qualified Windows XP systems with Pro Tools LE 6.1.1 (for example, if the ASIO Driver was uninstalled), or it can be installed as a stand-alone driver on systems that do not have any version of Pro Tools installed.

 For detailed information on installing and using the Digidesign ASIO Driver, see the electronic PDF of the Digidesign ASIO Driver Usage Guide.

---


## WaveDriver 6.1.1

Digidesign WaveDriver 6.1.1 is a single-client, multichannel sound driver that allows WaveDriver-compatible programs to play back through Digidesign hardware.

WaveDriver 6.1.1 is automatically installed when you install Pro Tools LE 6.1.1.

## Stand-Alone WaveDriver Installer

Digidesign WaveDriver 6.1.1 can be installed on Digidesign-qualified Windows XP systems with Pro Tools LE 6.1.1 (for example, if the WaveDriver was uninstalled), or it can be installed as a stand-alone driver on systems that do not have any version of Pro Tools installed.

 For detailed information on installing and using the Digidesign WaveDriver, see the electronic PDF of the Digidesign WaveDriver Usage Guide.

---

## Improved Direct I/O MIDI Driver for Digi 002, Digi 002 Rack, and Digi 001

Pro Tools LE 6.1.1 includes enhancements to the Direct I/O MIDI driver for Digi 002, Digi 002 Rack, and Digi 001. The new driver lets you launch and quit Pro Tools, and third-party audio and MIDI applications in any order.

The Direct I/O MIDI driver is multi-client, so you can use it with more than one MIDI program at a time; however, Direct I/O for audio is single-client, so you cannot use it with more than one audio program at a time.

## chapter 3

# What's New in Pro Tools LE 6.1.1 on Mac OS X

This chapter provides an overview of features that are new in Pro Tools LE 6.1.1 systems on Mac OS X.

---

## Custom Shuttle Lock Speed

Pro Tools LE 6.1.1 adds a Custom Shuttle Lock Speed preference to specify the speed for fixed-speed shuttle mode operations.

Shuttle Lock mode lets you use the numeric keypad to shuttle forward or backwards at specific speeds: 5 is normal speed, 6–9 provide increasingly faster fast-forward speeds, and keys 1–4 provide progressively faster rewind speeds (4 is the slowest rewind Shuttle Lock speed, 1 is the fastest).

Using the Custom Shuttle Lock Speed preference, you can customize the highest fast-forward Shuttle Lock speed (key 9) to better match your editing and auditioning needs.

### To configure Custom Shuttle Lock Speed:

- 1 In Pro Tools, choose **Setup > Preferences**, and click the **Operations** tab.
- 2 Enter a desired percentage for the Custom Shuttle Lock Speed setting. The range for this setting is 50–800%.



*The Custom Shuttle Lock Speed setting can also be increased or decreased using the Arrow keys.*

- 3 Click **OK**. The new Custom Shuttle Lock Speed will be saved to the Pro Tools preferences (not with the session).
- 4 The new Custom Shuttle Lock Speed can be activated by pressing **Control+9** (numeric keypad).



*For more information on Shuttle Lock, see the Pro Tools Reference Guide.*

---

## Auto-Scrolling Tracks in the Edit and Mix Windows

If you are working with more tracks than can be displayed at one time in the Edit or Mix windows, you can select a track in one window and Pro Tools will automatically scroll to that track in the other window.

**To auto-scroll the Mix window to show a selected track in the Edit window:**

- In the Edit window, Control-click (Mac OS) the track name.

The track becomes selected, and the Mix window scrolls to display the selected track.

**To auto-scroll the Edit window to show a selected track in the Mix window:**

- In the Mix window, Control-click (Mac OS) the track name.

The track becomes selected, and the Edit window scrolls to display the selected track.

---


## Digidesign CoreAudio Driver 6.1.1

Digidesign CoreAudio Driver 6.1.1 is a single-client, multichannel sound driver that allows CoreAudio-compatible programs to record and play back through Digidesign hardware.

CoreAudio Driver 6.1.1 is automatically installed when you install Pro Tools LE 6.1.1.

## Stand-Alone Digidesign CoreAudio Driver Installer

Digidesign CoreAudio Driver 6.1.1 can be installed on Digidesign-qualified Macintosh systems running Mac OS X 10.2.6 or higher with Pro Tools 6.x installed (for example, if the CoreAudio Driver was uninstalled), or it can be installed as a stand-alone driver on systems that do not have Pro Tools installed.

 *For detailed information on installing and using the Digidesign CoreAudio Driver, see the electronic PDF of the Digidesign CoreAudio Driver Usage Guide.*

## Support for CoreAudio with Digi 002 and Digi 002 Rack

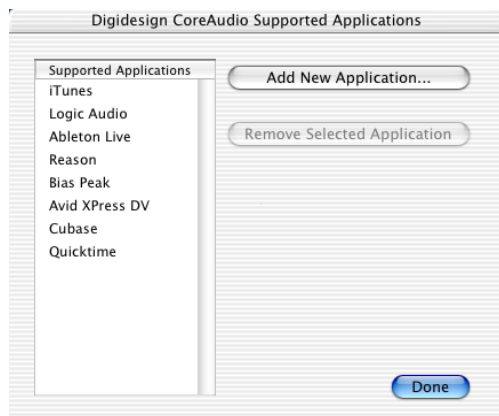
Digidesign CoreAudio Driver 6.1.1 adds support for Digi 002 and Digi 002 Rack systems.

## CoreAudio Supported Applications Feature

Digidesign CoreAudio Driver 6.1.1 provides the Supported Applications feature to let you specify which CoreAudio-compatible applications can be used with the Digidesign CoreAudio Driver, and which should be excluded.

**To add support for a CoreAudio-compatible application:**

- 1 Launch Digidesign CoreAudio Setup (located in /Applications/Digidesign).
- 2 Click Supported Applications. The Digidesign CoreAudio Supported Applications window opens.



*Digidesign CoreAudio Supported Applications window*

3 In the Digidesign CoreAudio Supported Applications window, click Add New Application. The Open dialog appears.

4 In the Open dialog, select the CoreAudio-compatible application you want to add.

**5** Click Open. The selected application is added to the Supported Applications list and can be used with the Digidesign CoreAudio Driver.

**6** When you are finished adding to the Supported Applications List, click Done.

**7** In Digidesign CoreAudio Setup, click Done to apply your changes.

**To remove support for a CoreAudio-compatible application:**

**1** Launch Digidesign CoreAudio Setup (located in /Applications/Digidesign).

**2** Click Supported Applications. The Digidesign CoreAudio Supported Applications window opens.

**3** In the Supported Applications list, select the application you want to remove.

**4** Click Remove Selected Application. The selected application is removed from the Supported Applications list and cannot be used with the Digidesign CoreAudio Driver.

**5** Repeat steps 3–4 for any additional applications you want to remove.

**6** When you are finished removing applications from the Supported Applications List, click Done.

**7** In Digidesign CoreAudio Setup, click Done to apply your changes.

---

## **Improved Direct I/O MIDI Driver for Digi 002, Digi 002 Rack, and Digi 001**

Pro Tools 6.1.1 includes enhancements to the Direct I/O MIDI driver for Digi 002, Digi 002 Rack, and Digi 001. The new driver lets you launch and quit Pro Tools, and third-party audio and MIDI applications in any order.

The Direct I/O MIDI driver is multi-client, so you can use it with more than one MIDI application at a time; however, Direct I/O for audio is single-client, so you cannot use it with more than one audio application at a time.