

# Pro Tools

## Addendum

**Version 6.6 for HD Systems on Macintosh**

### **Digidesign**

2001 Junipero Serra Boulevard  
Daly City, CA 94014-3886 USA  
tel: 650-731-6300  
fax: 650-731-6399

### **Technical Support (USA)**

tel: 650-731-6100  
fax: 650-731-6384

### **Product Information (USA)**

tel: 650-731-6102  
tel: 800-333-2137

### **International Offices**

Visit the Digidesign Web site  
for contact information

### **Web Site**

[www.digidesign.com](http://www.digidesign.com)



**digidesign**

**Copyright**

This guide is copyrighted ©2004 by Digidesign, a division of Avid Technology, Inc. (hereafter "Digidesign"), with all rights reserved. Under copyright laws, this guide may not be duplicated in whole or in part without the written consent of Digidesign.

DIGIDESIGN, AVID and PRO TOOLS are trademarks or registered trademarks of Digidesign and/or Avid Technology, Inc. All other trademarks are the property of their respective owners.

All features and specifications subject to change without notice.

PN 932914137-00 REV A 09/04

# chapter 1


## Introduction

This addendum is a supplement to the Pro Tools 6.4 guides for Pro Tools|HD systems on Mac OS X.

### New Features

Pro Tools 6.6 includes support for the following new or enhanced features.

- Support for Avid Xpress® Pro and Avid Mojo™ on Mac OS X
- MXF video import and playback
- Pro Tools interface changes
- Optimizations for synchronization, Remote mode, and record allocation

 *Descriptions of these features are covered in Chapter 2, “What’s New in Pro Tools 6.6.”*

---

### System Requirements

Pro Tools 6.6 can be used on a Pro Tools|HD system on a Digidesign-qualified Macintosh.

For complete system requirements, visit the Digidesign Web site ([www.Digidesign.com](http://www.Digidesign.com)).

### Compatibility Information

Digidesign can only assure compatibility and provide support for hardware and software it has tested and approved.

For a list of Digidesign-qualified computers, operating systems, hard drives, and third-party devices, refer to the latest compatibility information on the Digidesign Web site ([www.digidesign.com/compato](http://www.digidesign.com/compato)).



## chapter 2

# What's New in Pro Tools 6.6

This chapter describes the new and changed features in Pro Tools TDM 6.6 for Pro Tools|HD systems on Macintosh.

Pro Tools and Avid Mojo video peripherals combine the powerful audio post-production features of Pro Tools|HD with integrated support for import and playback of Avid video media.

## Capabilities

### Pro Tools with Avid DNA Peripherals

Pro Tools with Avid DNA peripherals lets you:

- Import and play back Avid video on the Pro Tools Movie track with near sample-accurate precision against audio tracks.
- Spot individual video clips to new locations in the Movie track.
- View video edits and clip definitions in the Movie track.
- View the Movie track as a series of picture frames.
- Play video on an external NTSC or PAL monitor.
- Import mixed video resolutions to the Movie track.
- Import and play back true 24P and 25P (Progressive Scan) picture media created in Avid video workstations.

### Avid Xpress Pro

Avid Xpress Pro software with Avid Mojo lets you:

- Capture NTSC or PAL video.
- Import QuickTime clips as Avid video for easier handling.
- Import, batch digitize, and render Avid sequences, then export them as AAF sequences to Pro Tools.
- Digitize audio and video from an EDL by creating an Avid sequence with Avid EDL Manager™.
- Lay back audio and video simultaneously with Digital Cut.
- Export audio and video sequences as QuickTime or other format digital files.

---

## MXF Video Import and Playback

Pro Tools 6.6 adds the ability to import and play back MXF video files.

MXF is a media file format. There are MXF video files and MXF audio files, but not MXF sequences. Pro Tools can currently import and play back MXF video files, but not MXF audio files.

For more information (including how to import and play back MXF video files), see the *Avid Xpress Pro Workflow Guide*.

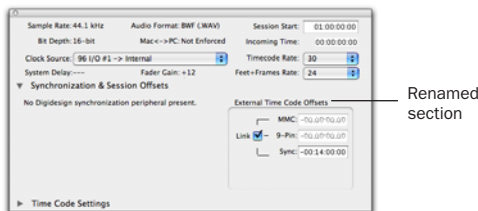
## Pro Tools Interface Changes

### Renamed Features

The Session Start Offsets section in the Session Setup window has been renamed to External Time Code Offsets.

**To view the External Time Code Offsets section of the Session Setup window:**

- 1 Choose Windows > Show Session Setup.
- 2 Click the Synchronization & Session Offsets Expand/Collapse icon.



Session Setup window (Synchronization & Session Offsets section shown)

### New Command in Setups Menu

The Redefine External Time Code Offset command has been added to the Setups menu. See “Redefine External Time Code Offset Command” on page 4 for more information.

## Optimizations for Remote Mode, Synchronization, and Record Allocation

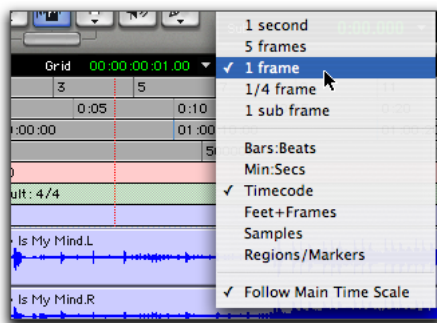
Pro Tools 6.6 contains enhancements that improve lock time and reliability when synchronizing to external time code. In addition, record start times are improved in non-synchronized workflows as well.

### Redefine External Time Code Offset Command

The new Redefine External Time Code Offset command (located in the Setup menu) makes it easy to recalculate time code offsets based on the current selection. This is particularly useful when synchronizing to a new picture cut that may have different time code from the original session.

**To redefine the external time code offsets:**

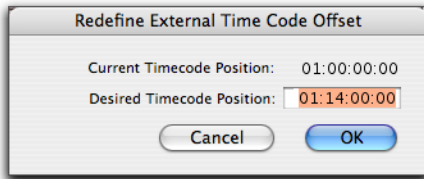
- 1 Set the Edit mode to Grid.
- 2 Set the Grid value to Timecode, with a unit setting of 1 frame.



- 3 Click the selector at a frame boundary where you can easily identify a picture sync point (for example, at the start of picture or an edit).

4 Choose Setups > Redefine External Time Code Offset.

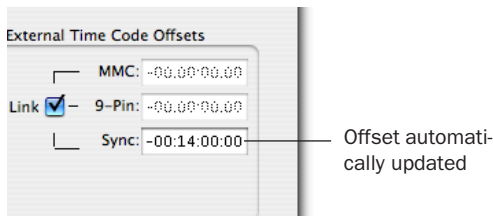
5 Enter the new time code position for the picture sync point you chose.



*Redefine External Time Code Offset dialog*

6 Click OK.

After you redefine the time code offset, the offset automatically updates in the Sync field under the External Time Code Offsets section of the Session window.



*External Time Code Offsets section in Session Setup window*

## Changes to Minimum Sync Delay

The Minimum Sync Delay preference (located in Setups > Peripherals > Synchronization) should not have to be adjusted during normal use, as Pro Tools will now automatically adjust for optimal lock times.

Pro Tools now keeps track of lock time “history,” then automatically optimizes play/video/record “priming” (pre-loading audio or pre-allocating disk space for recording) in order to get the fastest, most consistent lock time possible.

The Minimum Sync Delay preference now also sets the minimum time for *only* the first “learning pass.”

Pro Tools will “reset” its lock time to the Minimum Sync Delay amount when there have been significant changes in the amount of record-enabled tracks, or if video is taken online or offline. Pro Tools then re-optimizes for best and most consistent lock times and ignores the Minimum Sync Delay until there is another “reset.”

## Lockup Times for Synchronization

In order to maintain acceptable lockup times, do not TrackPunch-enable more tracks than necessary.