

# SampleCell Editor

## Addendum

**Version 3.0 for Macintosh**

### **Digidesign Inc.**

3401-A Hillview Avenue  
Palo Alto, CA 94304 USA  
tel: 650-842-7900  
fax: 650-842-7999

### **Technical Support (USA)**

650-842-6699  
650-856-4275

### **Product Information (USA)**

650-842-6602  
800-333-2137

### **Fax on Demand (USA)**

1-888-USE-DIGI (873-3444)

### **International Offices**

Visit the Digidesign Web site  
for contact information.

### **World Wide Web**

[www.digidesign.com](http://www.digidesign.com)

### **Digidesign FTP Site**

[ftp.digidesign.com](ftp://ftp.digidesign.com)

**digidesign®**

A division of **Avid**

## **Copyright**

This User's Guide is copyrighted ©2001 by Digidesign, a division of Avid Technology, Inc. (hereafter "Digidesign"), with all rights reserved. Under copyright laws, this manual may not be duplicated in whole or in part without the written consent of Digidesign.

DIGIDESIGN, AVID and PRO TOOLS are trademarks or registered trademarks of Digidesign and/or Avid Technology, Inc. All other trademarks are the property of their respective owners.

All features and specifications subject to change without notice.

PN 932909366-00 REV A 07/01

# contents

<b>Chapter 1. Introduction</b> .....	1
System Requirements .....	1
Installing SampleCell .....	2
Configuring OMS .....	2
Enabling Background MIDI Playback and Input Devices .....	3
<b>Chapter 2. New Features in SampleCell Editor 3.0</b> .....	5
Opening Banks or Instruments with 24-bit Audio Files .....	5
Audio File Support .....	5
Deselecting Instruments .....	6
Saving Banks and Instruments .....	6
Saved Instrument Settings .....	7
OMS Input Devices Setting .....	7
Reload Sample Command .....	7
Get Instrument Info .....	7
New SampleCell Preferences .....	8
<b>Chapter 3. MIDI Controller Numbers</b> .....	9



## chapter 1

# Introduction

This Addendum is a supplement to the SampleCell II Editor User Guide. It documents the new features in SampleCell Editor 3.0 for Macintosh.

---

## System Requirements

To use SampleCell Editor 3.0 you'll need:

- ◆ A Digidesign SampleCell II or SampleCell II Plus PCI card
- ◆ A Digidesign-qualified Power Macintosh computer with at least 16 MB RAM available for SampleCell Editor.
- ◆ Apple System software version 9.0.4 or later
- ◆ A 17-inch or larger color monitor; black and white monitors are not supported

## MIDI Requirements

You must install and configure OMS (Open Music System) software version 2.3.8 or later to use SampleCell Editor with MIDI devices. See “Configuring OMS” on page 2.

Both USB and serial MIDI interfaces work effectively with SampleCell Editor.

Serial MIDI interfaces require either a Mac serial port or a qualified modem-to-serial port adapter (thereby not using a PCI slot). Refer to Digidesign's Web site for supported adapters.

## Additional Equipment

Depending on your needs, the following items may also be required:

- An audio monitoring system such as a mixer, power amplifier, and speakers
- MIDI controller keyboard (or other MIDI controller device) and MIDI cables to trigger playback of SampleCell using MIDI
- MIDI sequencing software compatible with OMS

**⚠** *SampleCell II cards can also be used with Mark of the Unicorn's Performer and FreeMIDI instead of OMS. However, SampleCell will not receive MIDI directly through FreeMIDI, so you must route MIDI to SampleCell through one or more MIDI tracks in Performer. For details, refer to your Performer or FreeMIDI documentation.*

## Compatibility Information

For the latest compatibility information, visit Digidesign's Web site:

[www.digidesign.com/compato/](http://www.digidesign.com/compato/)

---

## Installing SampleCell

To use SampleCell Editor 3.0, remove any previous version and use version 3.0 in its place. You do not need to replace or update any other portions of the SampleCell software.

---

## Configuring OMS

To use SampleCell Editor with OMS-compatible MIDI applications, or to use the MIDI services in the SampleCell Editor, you'll need to install and configure the Open Music System (OMS).

OMS keeps track of how your MIDI studio is connected and configured and stores this information in Studio Setup documents, which are edited in the OMS Setup application. OMS also routes MIDI between SampleCell, OMS-compatible sequencers, and MIDI interfaces.

### Before you begin:

- If not yet installed, install the OMS software included with your SampleCell package.
- If OMS is already installed and configured, you'll need to update your current Studio Setup to recognize SampleCell.

### To update your current OMS Studio Setup:

- 1 Connect your MIDI interface, keyboard controllers, and other MIDI devices. Refer to their documentation if necessary.
- 2 Turn on the MIDI devices and start your computer.
- 3 Launch the OMS Setup application.

- 4 Choose Studio > MIDI Cards and Interfaces.

OMS searches for and locates your MIDI devices and the SampleCell driver and displays them in your Studio Setup document.

- 5 Double-click the SampleCell icon to configure its MIDI Device Info dialog.

Check that it is set it to receive on all channels (1–16), unless you only want it to receive MIDI on certain channels, then click OK.

- 6 Choose File > Save and Make Current, then Quit.

### To create a new OMS Studio Setup:

- 1 Connect your MIDI interface, keyboard controllers, and other MIDI devices. Refer to their documentation if necessary.

- 2 Turn on the MIDI devices and start your computer.

- 3 Launch the OMS Setup application.

- 4 Choose File > New Studio Setup.

OMS searches for and locates your MIDI devices and the SampleCell driver and displays them in your Studio Setup document.

- 5 Double-click the SampleCell Editor icon to configure its MIDI Device Info dialog.

Check that it is set it to receive on all channels (1–16), unless you only want it to receive MIDI on certain channels, then click OK.

- 6 Choose File > Save and Make Current, then Quit.

### In SampleCell Editor:

- 1 Launch SampleCell Editor.
- 2 Choose SampleCell > OMS Input Devices.
- 3 Select the MIDI controller and other devices that you will use to play SampleCell Editor.
- 4 To improve MIDI performance, disable any devices that you will not use for MIDI control of SampleCell Editor.

---

## Enabling Background MIDI Playback and Input Devices

SampleCell Editor routes MIDI (via OMS) from your keyboard controller to any Instruments assigned to the channel sent by your keyboard.

You can also trigger SampleCell Instruments from a MIDI keyboard when SampleCell Editor is *not* the current application by enabling background MIDI operation in OMS MIDI Setup. This option also allows an OMS-compatible sequencer to continue MIDI playback when *it* is no longer the current application—thereby allowing you to audition changes in SampleCell Editor while the sequencer continues playing.

Keep in mind that when Run MIDI in Background is enabled, and both the SampleCell Editor and your sequencer are echoing MIDI thru to the same Instrument, double-notes will occur.

To avoid this problem, make sure the Pass MIDI Thru in Background option is deselected in the SampleCell Preferences dialog if you have enabled MIDI in Background in OMS MIDI Setup.

### To enable background MIDI:

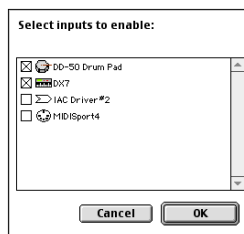
- 1 In SampleCell Editor, choose SampleCell > Preferences.
- 2 Choose SampleCell > MIDI Setup.
- 3 In the OMS MIDI Setup dialog, select Run MIDI in Background.
- 4 Click OK.

## Enabling OMS Input Devices

If you are using SampleCell Editor as a stand-alone application, you will need to enable your MIDI controller and other MIDI input devices so that you can use them with SampleCell.

### To enable MIDI input devices:

- 1 In the SampleCell Editor application, choose SampleCell > OMS Input Devices.



### Enabling OMS input devices

- 2 Select the devices that you want to use and click OK.





## chapter 2

# New Features in SampleCell Editor 3.0

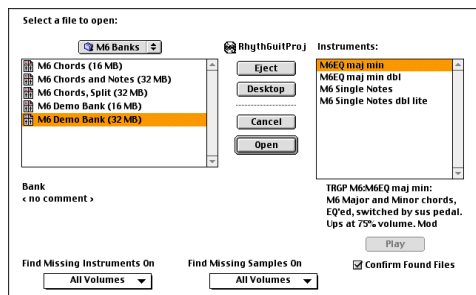
This chapter covers the new features in SampleCell Editor 3.0.

## Opening Banks or Instruments with 24-bit Audio Files

SampleCell Editor can now open Banks and Instruments containing 24-bit audio files. 24-bit audio will be converted to 16-bit depth on the SampleCell II card using a proprietary Digidesign Dither for maximum sound quality.

### To load an existing Bank:

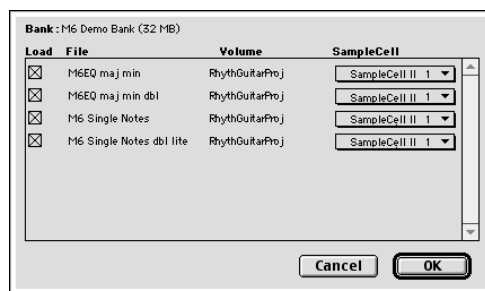
- 1 Choose File > Open.




### Opening a Bank

- 2 Select the Bank and click Open.

All selected instruments will be loaded. To skip specific instruments, deselect them.



### Select Instrument dialog

 If you are using Digidesign's Soft SampleCell in addition to a SampleCell II card, you can use the SampleCell pop-up menu in the dialog to choose where you want the Instrument loaded.

- 3 Click OK.

## Audio File Support

SampleCell Editor 3.0 adds support for WAV, Sound Designer I, and split-stereo audio files. Importing a split-stereo audio file into a mono Instrument will load only the channel that you select in the Open dialog.

---

## Deselecting Instruments

Instruments can now be deselected by clicking on any blank area in a Bank window. This is particularly important when saving Banks (see below).

---

## Saving Banks and Instruments

The Save Bank and Save Instrument commands have new “Save all instruments to a new location” and “Save all referenced samples to a new location” options that streamline saving Instruments and samples to disk.

**⚠** Note that the Save menu has changed in the File menu. Instead of separate commands for saving Banks and Instruments there is now a consolidated Save command that applies to whichever is currently selected.

## Saving a Bank

You can save all Instruments and samples associated with a Bank by using the Save Bank As command.

**⚠** SampleCell Editor doesn't automatically distinguish between samples, Instruments and Banks, making it possible to overwrite a sample if you accidentally save an identically named Instrument to the same location. For safety's sake, create separate folders for Banks, Instruments, and samples.

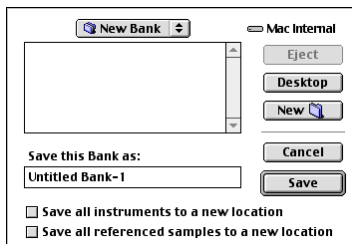
**To save the current Bank with its original name and destination:**

- Choose File > Save Bank.

**⚠** If the Save Bank command doesn't appear in the File menu, it is because an Instrument is currently selected on screen in the Bank window. Deselect the Instrument by clicking an empty area in the Bank window before saving a Bank.

**To save a Bank with a new name or destination:**

- 1 Choose File > Save Bank As.
- 2 Enter a name and choose the destination for the Bank.
- 3 Select “Save all instruments to a new location” if you want to save new copies of the Instruments associated with the Bank.



**Saving a Bank and Instruments**

- 4 Select “Save all referenced samples to a new location” if you want to save new copies of the samples associated with each Instrument.

**To save all changed Instruments and Banks:**

- Choose File > Save All Changed.


## Saving an Instrument

Most parameters are saved as part of a Bank, as well as with the Instrument. If you change the Instrument Comment or any parameter associated with an Instrument, however, the Instrument must be saved in order to preserve those changes.

While you will be automatically prompted to save these Instrument changes if you close a Bank, you can also save an Instrument manually.

### To save an Instrument with its original name and destination:

- Choose File > Save Instrument.

 *If the Save Instrument command doesn't appear in the File menu, it is because the Instrument is not currently selected on screen in the Bank window. Select the Instrument by clicking it before saving.*

### To save an Instrument with a new name or destination:

- 1 Choose File > Save Instrument As.
- 2 Enter a name and choose the destination for the Instrument.
- 3 Select “Save all referenced sample to a new location” if you want to save new copies of the samples associated with the Instrument.

### To save all changed Instruments and Banks:

- Choose File > Save All Changed or press Command+Option+S.

---

## Saved Instrument Settings

In previous versions of SampleCell Editor, the following Instrument parameters were saved and restored with Banks, but not with the Instrument itself:

- MIDI Channel
- Low/High Key
- Output Channel
- Pan
- Volume

SampleCell Editor 3.0 now saves these settings as part of the Instrument. Whenever the Instrument is loaded into a Bank, these parameters will default to the state in which you saved them.

---

## OMS Input Devices Setting

A new OMS Input Devices setting in the SampleCell menu activates and deactivate OMS input devices without requiring you to launch OMS Studio Setup.

---

## Reload Sample Command

A new Reload Sample command now appears in the Instrument menu. This command can be used to load or reload a sample or region that has been unloaded or modified and resaved.

---

## Get Instrument Info

This command has been moved and now appears in the File menu.

---

## New SampleCell Preferences

There are two new items in the SampleCell Preferences window:

- Pass MIDI Thru Unchanged to SampleCell
- Pass MIDI Thru When in Background

**Pass MIDI Thru unchanged** Allows you to trigger SampleCell playback from a MIDI sequencer or from a MIDI application on a different computer. With this option selected, notes are triggered according to the channel sent by your MIDI controller, regardless of which Instrument is selected. MIDI notes will be sent to Instruments set to the corresponding channel on all SampleCell cards. If you want MIDI thruing to occur in the background, also select the Pass MIDI Thru When in Background option.

**Pass MIDI thru when in background** Allows external MIDI devices to continue triggering playback of Soft SampleCell, even if SampleCell Editor is not the current application. Also select Pass MIDI Thru Unchanged in the SampleCell Preferences dialog for this to work properly.

## chapter 3

# MIDI Controller Numbers

SampleCell Editor allows you to select two MIDI controller numbers from a total list of 120 as modulation sources. This enables you to use, for example, a breath controller (MIDI Controller #2) to modulate Volume or a foot pedal (MIDI Controller #4) to modulate LFO Amplitude.

*Table 1. MIDI controller numbers*

Controller Number	Controller Type
0	Bank Select
1	Modulation Wheel
2	Breath Control
3	Undefined 6
4	Foot Controller
5	Portamento Time
6	Data Entry
7	Channel Volume
8	Balance
9	Undefined
10	Pan
11	Expression Controller

*Table 1. MIDI controller numbers*

Controller Number	Controller Type
12	Effect Control 1
13	Effect Control 1
14 - 15	Undefined
16	General Purpose Controller #1
17	General Purpose Controller #2
18	General Purpose Controller #3
19	General Purpose Controller #4
20 - 31	Undefined
32	Bank Select
33	Modulation Wheel
34	Breath Control
35	Undefined
36	Foot Controller
37	Portamento Time
38	Data Entry
39	Channel Volume

**Table 1. MIDI controller numbers**

Controller Number	Controller Type
40	Balance
41	Undefined
42	Pan
43	Expression Controller
44	Effect Control 1
45	Effect Control 2
46 - 47	Undefined
48	General Purpose Controller #1
49	General Purpose Controller #2
50	General Purpose Controller #3
51	General Purpose Controller #4
52 - 63	Undefined
64	Damper Pedal on/off (Sustain)
65	Portamento on/off
66	Sostenuto on/off
67	Soft pedal on/off
68	Legato Footswitch
69	Hold 2
70	Sound Cont. 1 (Sound Variation)
71	Sound Cont. 2 (Timbre/Harmonic Intensity)
72	Sound Cont. 3 (Release Time)
73	Sound Cont. 4 (Attack Time)

**Table 1. MIDI controller numbers**

Controller Number	Controller Type
74	Sound Cont. 5 (Brightness)
75	Sound Cont. 6 (Decay Time)
76	Sound Cont. 7 (Vibrato Rate)
77	Sound Cont. 8 (Vibrato Depth)
78	Sound Cont. 9 (Vibrato Delay)
79	Sound Cont. 10
80	General Purpose Controller #5
81	General Purpose Controller #6
82	General Purpose Controller #7
83	General Purpose Controller #8
84	Portamento Control
85 - 90	Undefined
91	Reverb Send Level
92	Effects 2 Depth (Tremolo Depth)
93	Chorus Send Level
94	Effects 4 Depth (Celeste/Detune Depth)
95	Effects 5 Depth (Phaser Depth)
96	Data entry +1
97	Data entry -1
98	Non-Registered Parameter Number
99	Non-Registered Parameter Number

**Table 1. MIDI controller numbers**

<b>Controller Number</b>	<b>Controller Type</b>
100	Registered Parameter Number
101	Registered Parameter Number
102 - 119	Undefined

