

Hard Drive Installation Guide

For D-Show Systems

Replacing a D-Show Hard Drive

The following procedure outlines the steps for removing and replacing the hard drive in the D-Show FOH Rack.



D-Show hard drive

⚠ If you are using a power screwdriver be sure to use the lowest torque setting to prevent damage to screws or inserts.

To remove the D-Show FOH Rack Hard Drive:

- 1 Power down the FOH Rack and disconnect all power, audio and D-Show cables from the unit.
- 2 Using a #1 Phillips screwdriver, remove the 4 type P (M3 x 6 flat head) screws that secure the hard drive bay to the FOH Rack.



Removing the hard drive bay from the FOH Rack

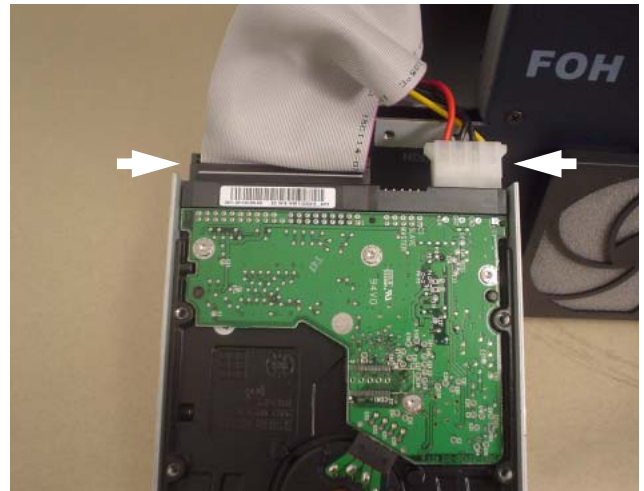
- 3 Slide out the hard drive bay from the FOH Rack.



Sliding the hard drive bay from the FOH Rack

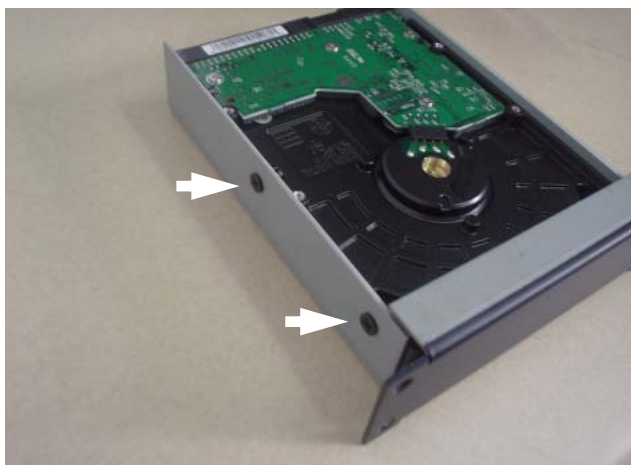
- 4 The IDE cable and the 4-pin power cable are hot-glued in place. Use a small flat blade screwdriver or X-acto knife to carefully remove the bead of glue holding each connector in place.

- 5 Disconnect the IDE cable and power cable, while taking note of the cable plug orientation for each cable.

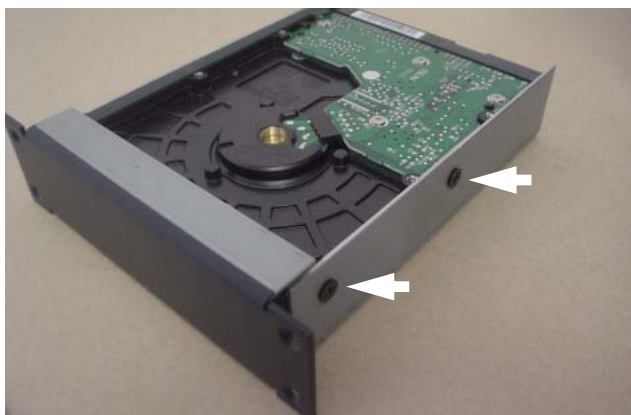


Disconnecting cables from the hard drive

6 Using a #1 Phillips screwdriver, remove the 4 type R (6-32 x 3/8-inch flat head) screws that secure the hard drive to the hard drive bay.

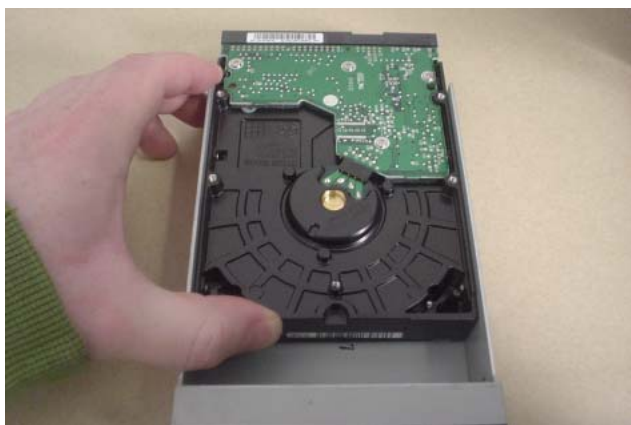


Removing screws from the hard drive bay (left)



Removing screws from the hard drive bay (right)

7 Carefully slide the hard drive away from the front of the hard drive bay.



Sliding the hard drive backward in the drive bay

8 Lift the hard drive up and out of the hard drive bay.




Lifting the hard drive from the drive bay

To replace the D-Show FOH Rack Hard Drive:

- 1 Before placing the new drive in the bay, make sure its jumpers are configured to place the drive in Master mode. (Refer to the drive manufacturer's instructions if necessary.)
- 2 Carefully place the new drive into the drive bay, and slide it forward into position.
- 3 Using a #1 Phillips screwdriver, replace the 4 type R screws that secure the hard drive to the hard drive bay.
- 4 Connect the IDE cable (using the same plug as before) and the power cable, preserving their original plug orientation.
- 5 (Recommended) Apply a small bead of hot glue to each connector where it meets the drive chassis to keep it in place.
- 6 Slide the hard drive bay into position in the FOH Rack.
- 7 Using a #1 Phillips screwdriver, replace the 4 type P screws that secure the Hard Drive Bay to the FOH Rack.

Preparing the New Drive for Use

The new hard drive is pre-formatted for use with D-Show, but does not contain any D-Show software. Use the D-Show System Restore CD that shipped with the console to install the D-Show system software. After you install the D-Show software, you can then install any plug-ins and transfer any Show files and Preset files to the new system.

 See the *D-Show Guide* for details on installing D-Show software and plug-ins, and transferring Show and Preset files.

Copyright

This document is copyrighted ©2005 by Digidesign, a division of Avid Technology, Inc. (hereafter "Digidesign"), with all rights reserved. Under copyright laws, this document may not be duplicated in whole or in part without the written consent of Digidesign.

DIGIDESIGN, AVID, D-SHOW and PRO TOOLS are trademarks or registered trademarks of Digidesign and/or Avid Technology, Inc. All other trademarks are the property of their respective owners.

All features and specifications subject to change without notice.

PN 9321-17916-00 REV A 07/05